

# CELLULAR SHADES

The unique structure of Cellular Shades means that air is trapped in the honeycomb cells slowing down the transfer of air from outside to in and inside to out. This helps keep your home warmer in winter and cooler in summer and will save on energy costs.

They are also stylish and versatile, with different fabric and cell types, and an array of stunning colours. They can be lowered from the top as well as raised from the bottom and make a practical, elegant covering for skylights and shaped windows.

It's easy to see why Cellular Shades are the perfect solution for your home.



Call us 132 899 Visit [apolloblinds.com.au](http://apolloblinds.com.au)

# CELLULAR SHADES



- The most energy efficient Internal Blinds on the market
- Air is trapped in the honeycomb cells, slowing down the transfer of air (warmer in winter cooler in summer)
- Choice of:
  - Light Filtering & Blockout Fabrics
  - White Back or Colour Matched Back
  - All fabrics are made from 100% polyester material
- Single & Double Cell
- Skylights & Shapes are available for unique situations
- Varying control and stacking option
- Colour Coordinated head box & bottom rail
- Extremely compact projection and stacking
- Air freight (2 to 3 weeks delivery)
- Sea freight (6 to 8 weeks delivery)



MANUFACTURED  
OVERSEAS



# CELLULAR SHADES



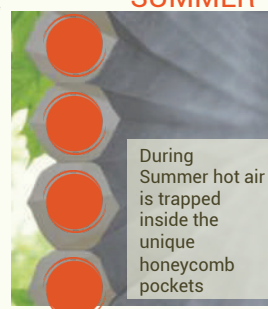
- The unique structure of the cellular blind means that air is trapped in the honeycomb cells which means you are able to keep your house warm in the winter months and cool in the summer months.
- Cellular blinds have superior energy efficiency and durability and are a fantastic modern alternative to roller blinds.
- Cellular blinds are great for a 'light filtering' effect, and also come in blackout cell with the alternative for either single or double cell styles.

The light filtering range will maintain your complete privacy, whilst offering a subtle light inside your home during the day. Blockout cellular blinds will provide you with a complete room darkening solution and will offer increased energy efficiency.

- Over 30% of heat can be gained during Summer, as well as lost during the Winter time through our windows. For this reason, window coverings, are a vital part of combating your house's ability to remain energy efficient in either extremes that the weather can bring. Installing a cellular blind in your home, will improve your insulation dramatically as the unique honeycomb structures trap heat during Summer and prevents heat loss during Winter.



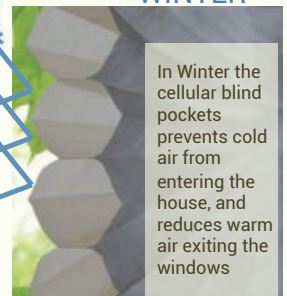
## SUMMER



During Summer hot air is trapped inside the unique honeycomb pockets



## WINTER



In Winter the cellular blind pockets prevents cold air from entering the house, and reduces warm air exiting the windows



MANUFACTURED  
OVERSEAS

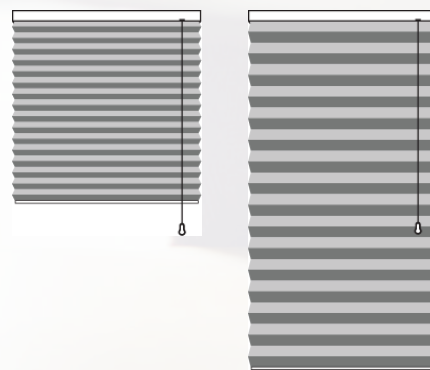
# OPTIONS

## CELLULAR SHADES

### OPERATION STYLES

#### CORDED

- Small flat cord lock system blends into overall blind finish.
- For a standard corded blind, when the blind is fully down, the cord is approx. 1/3 of the drop of the blind.



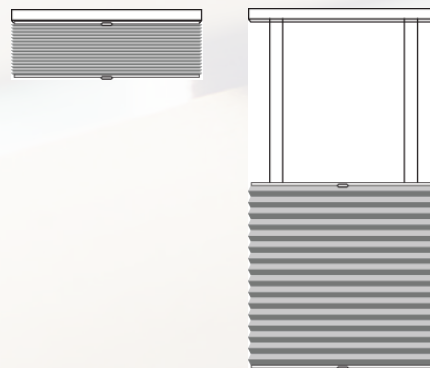
#### CORDLESS

- 100% child safe
- Clear operating handle Included



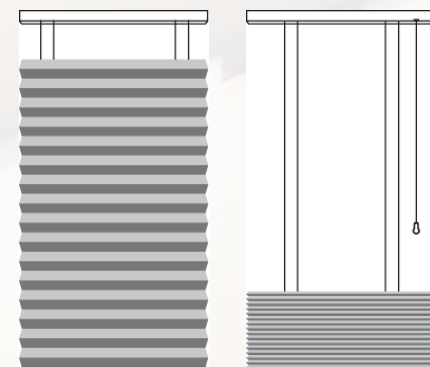
#### TOP DOWN BOTTOM UP CORDLESS

- 100% child safe
- Operating handle for mid/bottom rails included



#### TOP DOWN BOTTOM UP CORD/CORDLESS

- Cord lowers down function
- Blind can be lifted up Cordlessly



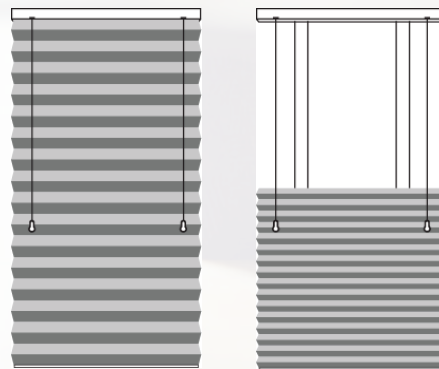
# OPTIONS

## CELLULAR SHADES

### OPERATION STYLES

#### TOP DOWN BOTTOM UP CORD/CORD

- Left cord releases top down function  
Right cord draws blind up.



### CELLULAR STACKING CHART

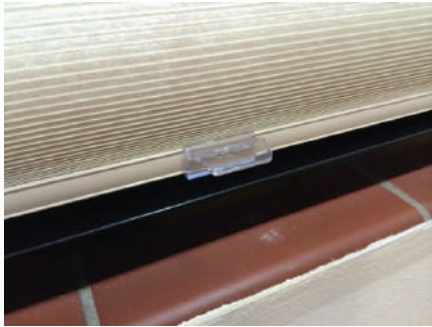
35mm Double Cell & Blockout		
With head and bottom rail (includes bracket)		
Length (mm)	Double Cell(mm)	Blockout mm)
600	83	74
900	93	80
1200	104	86
1500	114	92
1800	131	102
2100	143	109
2400	154	116

25mm Single Cell Light Filtering & Blockout		
With head and bottom rail(includes bracket)		
Length (mm)	Double Cell(mm)	Blockout mm)
600	55	54
900	63	60
1200	70	66
1500	77	72
1800	89	82
2100	96	89
2400	104	96



# OPTIONS

## CELLULAR SHADES



**CORDLESS HANDLE**



**STANDARD HEAD BOX**



**TOP DOWN BOTTOM UP HEAD BOX**



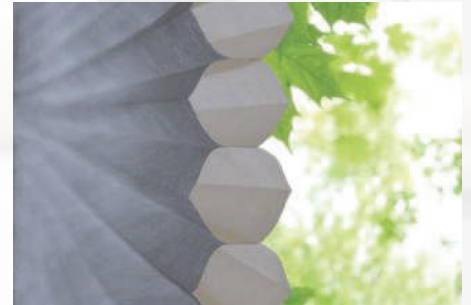
**TOP DOWN BOTTOM UP**

# OPTIONS

## CELLULAR SHADES

### OSLO 25MM POINT DYED SINGLE CELL LIGHT FILTERING

- Subtle light filtering effect
- Maximum width 2400mm drop 2800mm
- Operating options – Cordless, Cord operated and Top Down Bottom Up
- Head box, bottom rails and operating cords are colour matched
- Top Down Bottom Up has a built in pelmet to cover middle rail

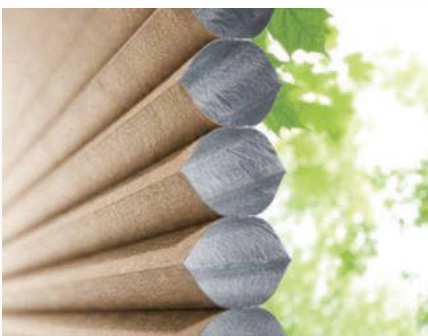


### MILAN 25MM SINGLE CELL SPUN LACE LIGHT FILTERING

- Cordless option and Top Down Bottom Up
- Maximum width 2400mm drop 2400mm
- Cord operated option maximum width 2800mm drop 2800mm
- Head box, bottom rails and operating cords are colour matched
- Top Down Bottom Up has a built in pelmet to cover middle rail
- Suitable for shapes and skylights

### ZURICH 35MM DOUBLE CELL SPUN LACE LIGHT FILTERING

- Double cell for better insulation
- Strong and durable fabric
- Cordless option maximum width 2400mm drop 2100mm
- Cord operated option maximum width 2600mm drop 2400mm
- Top Down Bottom Up option maximum width 2400mm drop 2400mm
- Head box, bottom rails and operating cords are colour matched
- Top Down Bottom Up has a built in pelmet to cover middle rail



### PRAGUE 25MM POINT DYED SINGLE CELL BLOCKOUT

- Aluminium core for increased comfort from heat and cold
- Cord operated and Top Down Bottom Up maximum width 2400mm drop 2800mm
- Head box, bottom rails and operating cords are colour matched
- Top Down Bottom Up has a built in pelmet to cover middle rail
- Suitable for shapes and skylights

### VIENNA 35MM SINGLE CELL POINT DYED BLOCKOUT

- Aluminium core for increased comfort from heat and cold
- Cordless option and Top Down Bottom Up maximum width 2400mm drop 2400mm
- Cord operated maximum width 2600mm drop 2800mm
- Head box, bottom rails and operating cords are colour matched
- Top Down Bottom Up has a built in pelmet to cover middle rail

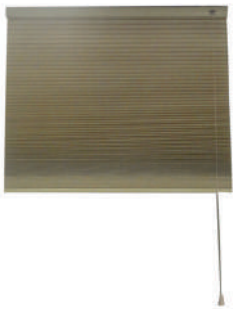




# CELLULAR SHADES

## PRODUCT INFORMATION

### OPERATION STYLES:



CORDED



CORDLESS



TOP DOWN BOTTOM  
UP CORDLESS



TOP DOWN BOTTOM  
UP CORDED



TOP DOWN BOTTOM  
UP CORD/ CORD

### CELLULAR SHADES SIZES:

#### 25mm Single Cell Spunlace Light Filtering

All Operations

MINIMUM WIDTH:

450mm

MAXIMIM WIDTH:

2400mm

MAXIMUM DROP:

2400mm\*

#### 35mm Double Cell

Cordless, Top Down Bottom Up Corded & Cordless  
Cordless Operation

450mm

450mm

2400mm

2400mm

2400mm

2400mm\*

#### 25mm Single Cell Point Bond Light Filtering

Cordless, Top Down Bottom Up Corded & Cordless  
Cordless Operation

450mm

450mm

2400mm

2400mm

2400mm

2400mm\*

#### 25mm Single Cell Blockout

Top Down Bottom Up Cord/ Cord Only (unavailable cordless)  
Cordless Operation

450mm

450mm

2400mm

2400mm

2400mm

2400mm\*

#### 35mm Single Cell Blockout

Cordless, Top Down Bottom Up Corded & Cordless  
Cordless Operation

450mm

450mm

2400mm

2400mm

2400mm

2400mm\*

*\*Maximum drop for a 450mm width blind is 1800mm*

**\*\*Please note that small width blinds with long drops are subject to the manufactures' discretion of whether they are able to be manufactured e.g. 900mm x 2400mm. We will confirm as soon as possible with you if there are any issues with your orders.**



# CARE & CLEANING

Regularly dust lightly with a feather duster. If you have a vacuum, use the brush attachment and without using any pressure, sweep both front and back sides of the blind panel.

For spot cleaning, use a soft cloth or sponge with warm water. Blot gently and let dry completely. Avoid crushing or wrinkling the blinds.

Let Apollo Blinds open your mind to new decorator ideas. Since 1988 Apollo Blinds has focused on delivering the latest in home fashions with consistent reliable service. An Australian owned company with most products still being manufactured in Australia, Apollo Blinds gives you peace of mind – all fabrics and components come with a 2 year guarantee (1 year in home) on manufacture and materials\*. Some materials or components may carry additional manufacturer's warranty\*.

Call us 132 899 Visit [apolloblinds.com.au](http://apolloblinds.com.au) Email [sales@apolloblinds.com.au](mailto:sales@apolloblinds.com.au)

## Head Office and Factory

Sydney 172 Silverwater Road, (Corner Holker St) Silverwater NSW 2128

## Showrooms

Sydney 172 Silverwater Road, (Corner Holker St) Silverwater NSW 2128

Melbourne 7/19-23 Clarinda Road, Oakleigh South VIC 3167

Brisbane Unit 1, 48 Kingston Road, Underwood QLD 4119

Newcastle 414 Pacific Highway, Belmont NSW 2280

Canberra Unit 1, 6 Wiluna Street, Fyshwick ACT 2609

Port Macquarie 6/185 Lake Road, Port Macquarie NSW 2444

Coffs Harbour 3/12 Isles Drive, North Boambee Valley NSW 2450

Wollongong 210 Princes Highway, Albion Park Rail NSW 2527

Ballina 1/23 Dudgeons Lane, Bangalow NSW 2479

Tamworth Shop 3, 164 Peel Street, Tamworth NSW 2340

## Mobile Showrooms

Albury, Batemans Bay, Dubbo, Gold Coast, Orange, Wagga



MANUFACTURED  
IN AUSTRALIA



MANUFACTURED  
OVERSEAS

The information and products in this brochure are correct as at 1st January 2016 but may vary after this date. Not all products may be available at all outlets. \*Some conditions apply.

